

INDICATIVE PLANT LIST					CUMBERLAND	
ID	BOTANICAL NAME	COMMON NAME	MATURE HEIGHT	POT SIZE	QUANTITY	PLAIN WOODLAND SPECIES
			(m)			

Archa	<i>Argemone barken</i>	Narrow-leaved Apple	10m	100L	3	X
Ch-l	<i>Citrus limon sunka'</i>	Dwarf eureka lemon	2.5m	45L	5	
Co-fi	<i>Corymbia ficifolia</i>	Red Flowering Gum	7m	100L	4	
Bu-ac	<i>Burchardia acutifolia</i>	Illawarra flame tree	20m	100L	1	
Bu-ec	<i>Buckinghamia colossalis</i>	hooy cutt	8m	100L	3	
Eu-cl	<i>Eucalyptus crenea</i>	Silver dollar	13m	300mm	2	
Eu-su	<i>Eucalyptus sumneri Beauty</i>	Flowering Gum Trees	5m	100L	1	
Eu-su	<i>Excelsarpus cupressiformis</i>	Native Cherry	6m	75L	2	
Hy-f	<i>Hymenosporum flavum</i>	Native Frangipani	75L	100L	1	X
Ma-to	<i>Malva Tom Matthews'</i>	Tom Matthews Crab Apple	3m	75L	7	
Me-br	<i>Maleuca bracteata Revolution Gold'</i>	Honey Myrtle	4m	75L	4	
Me-de	<i>Maleuca decora</i>	Paperbark	10m	100L	4	X
Py-ca	<i>Pyrus calleryana Chanticleer</i>	Chanticleer Pear	10m	75L	3	
Tr-la	<i>Trianopsis laurina</i>	Water Gum	15m	100L	9	
Wa-fi	<i>Waterhousea floribunda</i>	Weeping Lilly Pilli	15m	100L	9	
Ua-gi	<i>Ulmus glabra Camperdowni'</i>	Weeping Wych Elm	4m	75L	2	
U-pa	<i>Ulmus parvifolia Emmer 1' -Albana</i>	Chinese Elm	10m	100L	1	

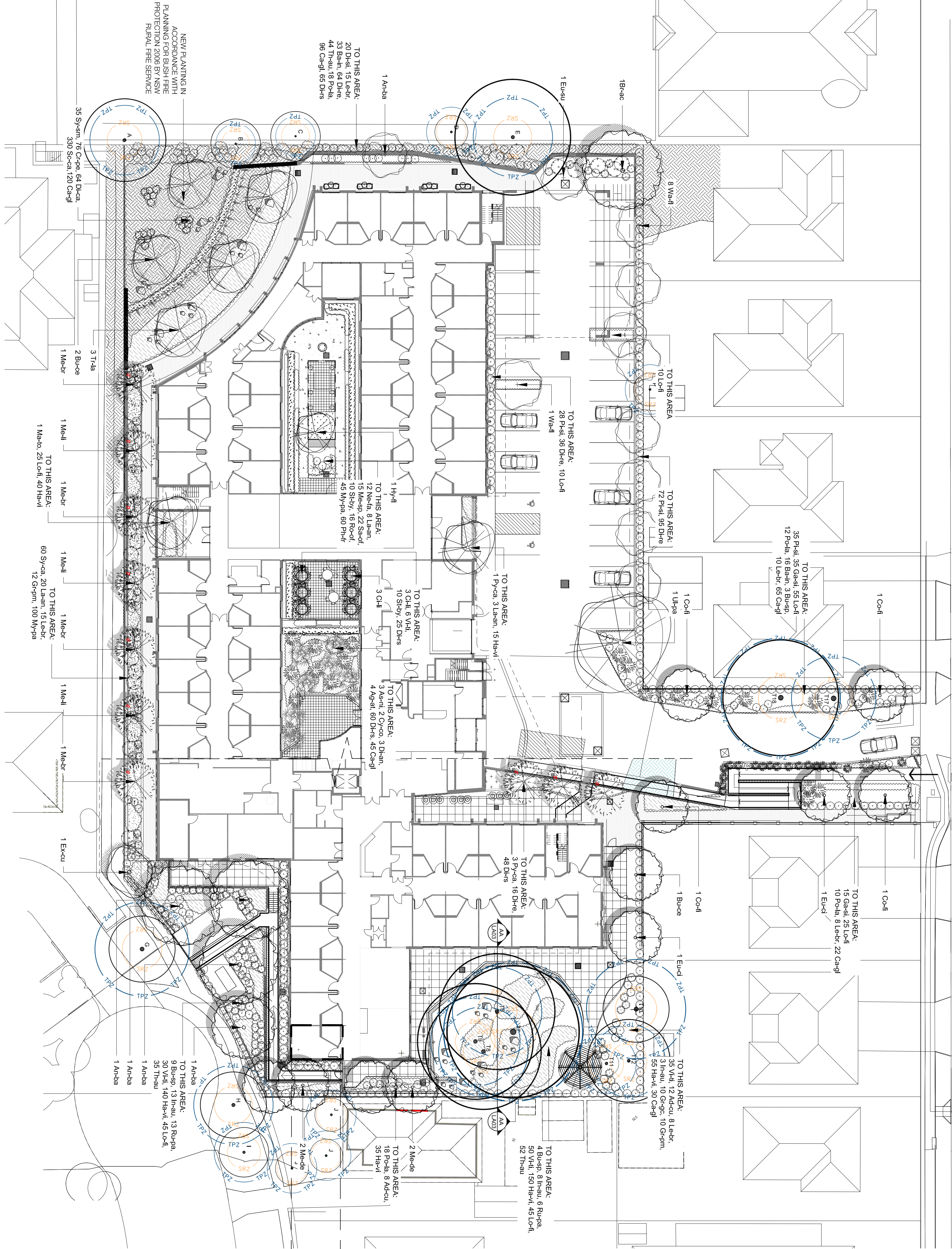
Ad-cu	<i>Adiantum cunninghamii Lighthouse</i>	Prestatie Woolly Bush	1m	300mm	23	
Ag-at	<i>Agave attenuata</i>	Foxtail agave	2m	300mm	4	
Bu-sp	<i>Bursaria spinosa</i>	Black Thorn	5m	300mm	16	X
Cr-pe	<i>Citrum pedunculatum</i>	Swamp Lily	3m	300mm	76	
Ne-la	<i>Nepentha x faaseni Walkers Low'</i>	Gamini Walkers Low	0.3m	300mm	15	
D-si	<i>Dillwynia sieberi</i>	Pickly Pandi Paa	2m	300mm	20	
In-au	<i>Indigofera australis</i>	Australian Indigo	1.2m	300mm	24	X
La-en	<i>Leucophaea argusfolia</i>	Lanewder	0.9m	300mm	37	
Le-br	<i>Leucophaea brownii</i>	Cushion Bush	1m	300mm	56	
Me-sp	<i>Mentha spicata</i>	Mint	0.6m	300mm	15	
Pl-si	<i>Philopodium teretifolium Silver sheen'</i>	Christmas berry Silver Sheen	3m	300mm	135	
Pl-ri	<i>Phytolacca x fasseri Red Robin'</i>	Rosemary	2.5	300mm	136	
Ru-of	<i>Rosa rostrata officinalis</i>	Thimbleberry	1.5m	150mm	16	
Ru-pa	<i>Rubus pavlovskii</i>	Sage	2.5m	300mm	19	
Sa-of	<i>Salvia officinalis</i>	Lamb's Ear	0.8m	300mm	37	
Sl-ay	<i>Styrax bixanensis</i>	Cascade Lilly Pilli	3m	300mm	60	
Sy-ca	<i>Syzygium smithii</i>	Lilly Pilli	5m	300mm	35	
Va-lu	<i>Vitumnum tinus</i>	Laurelinus	3m	300mm	133	

As-ci	<i>Asplenium nidus</i>	Birds-nest fern	1m	45L	3	
Cy-co	<i>Cyrtos olivaceus</i>	Corn Spoil Fern	6m	45L	2	
Dn-en	<i>Dicksonia antarctica</i>	Sat Tree Fern	8m	45L	3	

Ba-in	<i>Banksia integrifolia Roller Coaster'</i>	Prestatie Banksia	0.4m	150mm	49	
Ca-gi	<i>Callistophyllum gracilicorne</i>	Pig face	0.3m	150mm	453	
Du-ca	<i>Dumetia cuneata</i>	Blue Wax Lily	1m	150mm	64	
Du-re	<i>Dumetia erodia</i>	Maize Wax Lily	0.5	150mm	265	
Du-re	<i>Dumetia erodia</i>	Kelley Weed	0.2m	150mm	138	
Gr-pa	<i>Grevillea pumila Royal Mantle'</i>	Grevillea	0.3m	150mm	22	
Gr-pa	<i>Grevillea pumila Royal Mantle'</i>	Grevillea	0.3m	150mm	34	
Ha-l	<i>Hardenbergia violacea</i>	Purple Coral Pea	0.7m	150mm	355	X
Hy-ca	<i>Hydrocotyl jarovianum</i>	Creeeping Eucalyda	0.3m	150mm	231	
St-ca	<i>Stenactis canaliculata</i>	Dune Fan Flower	0.4m	150mm	330	

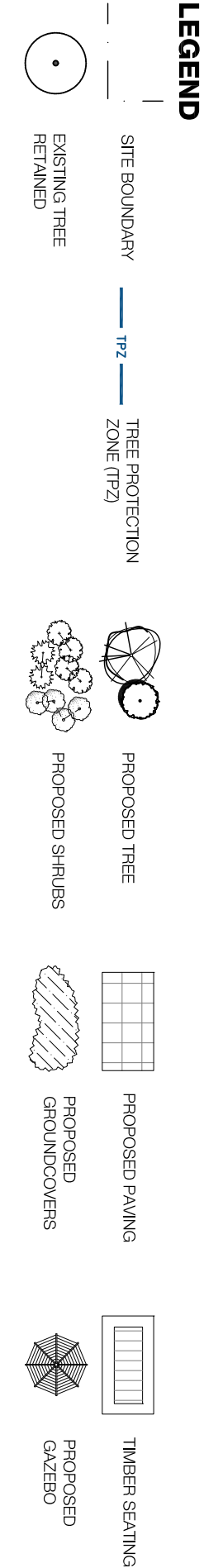
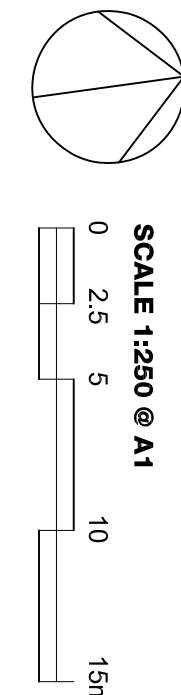
Gr-si	<i>Garrinia subserotina</i>	Saw-sedge	0.2	150mm	50	
Lo-cl	<i>Lomatium filiformis subsp. filiformis</i>	White mat-cush	1m	150mm	215	X
Pe-la	<i>Poa labillardieri</i>	Tussock-grass	0.9m	150mm	58	
Tr-au	<i>Themeda australis</i>	Kangaroo Grass	1.5m	150mm	139	X

GROUND FLOOR INSERT
SEE LA04 FOR DETAIL



GROUND FLOOR

PLANTING PLAN



project: 18-026s OPAL BOSSLEY PARK
client: OPAL AGED CARE
date: 13.01.2020
revision: A
drawn: GT
checked: AL

specialist aged care

TaylorBrammer
TAYLOR BRAMMER LANDSCAPE ARCHITECTS PTY LTD
STUDIO • STUDIO
218 Oxford Street Wollstone, NSW 2035 E: sydney@taylorbrammer.com.au T: 61 2 9397 8895
Copyright © Taylor Brammer Landscape Architects Pty Ltd. 2020 10/20/24/2025

INDICATIVE PLANT LIST

ID	BOTANICAL NAME	COMMON NAME	CUMBERLAND PLAIN WOODLAND SPECIES	
			MATURE HEIGHT (m)	POT SIZE QUANTITY

TREES				
Ar-ha	<i>Argophora bakeri</i>	Narrow-leaved Apple	10m	100L
Ch-l	<i>Citrus limon var. navel</i>	Dwarf Rutabaga Lemon	2.5m	45L
Co-fl	<i>Corymba ficifolia</i>	Red Flowering Gum	7m	100L
Br-ac	<i>Brachychiton acerifolius</i>	Illawarra Flame Tree	20m	100L
Bu-ce	<i>Buckinghamia celsissima</i>	Irony Curl	8m	100L
Eu-ci	<i>Eucalyptus cinerea</i>	Silver Dollar	13m	300mm
Eu-su	<i>Eucalyptus Summer Beauty</i>	Flowering Gum Trees	5m	100L
Ex-cu	<i>Excelsiora cupressiformis</i>	Native Cherry	6m	75L
Hy-fl	<i>Hymenopodium flavum</i>	Native Frangipani	8m	100L
Ma-to	<i>Melaleuca bracteata</i>	Tom Matthews Crab Apple	3m	75L
Me-br	<i>Melaleuca decora</i>	Honey Myrtle	4m	75L
Me-de	<i>Melaleuca decora</i>	Paperbark	10m	100L
Py-ca	<i>Pyrus calleryana</i>	Snow in Summer	8m	100L
Ti-la	<i>Tristania laurina</i>	Chanticleer Pear	10m	75L
Wa-fl	<i>Walterhousia floribunda</i>	Water Gum	15m	100L
Ug-pl	<i>Ulmus glabra 'Campestris'</i>	Weeping Lill Pill	15m	100L
U-pa	<i>Ulmus parvifolia</i>	Weeping Wych Elm	4m	75L
	<i>Ulmus parvifolia 'Emer' T - Athens</i>	Chinese Elm	10m	100L

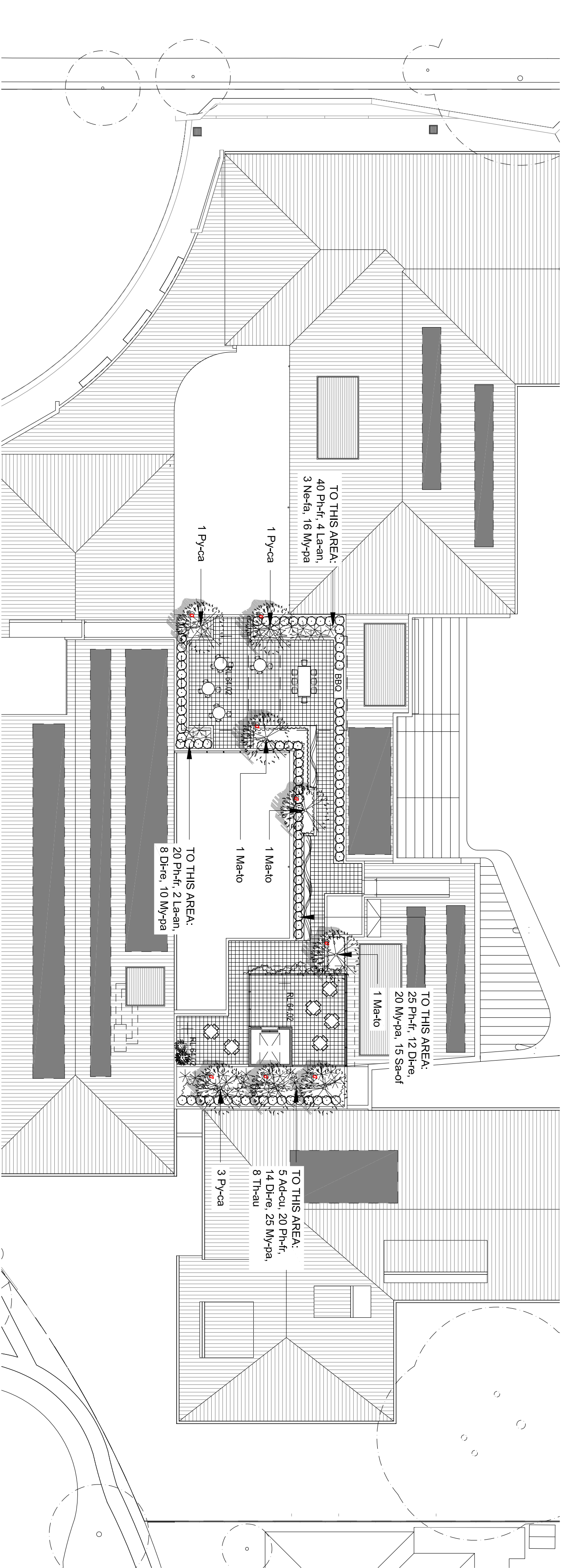
SHRUBS				
Ad-cu	<i>Adiantum cunninghamii</i>	Lighthouse	1m	300mm
Ag-al	<i>Agave attenuata</i>	Prostrate Woolly Bush	2m	300mm
Bu-sp	<i>Bursaria spinosa</i>	Foxtail Agave	5m	300mm
Cr-pe	<i>Cornus pedunculatum</i>	Black Them	3m	300mm
Ne-di	<i>Nepeta x rassenii</i>	Swamp Lily	3m	300mm
Ne-di	<i>Nepeta x rassenii</i>	Walkers Low	0.3m	300mm
Di-wy	<i>Dillwynia sieberi</i>	Cannell Walkers Low	0.3m	300mm
In-au	<i>Indigofera australis</i>	Pinkily Parrot Pea	2m	300mm
La-an	<i>Leandria angustifolia</i>	Australian Indigo	1-2m	300mm
Le-br	<i>Leucophaea brownii</i>	Lavender	0.9m	300mm
Me-sp	<i>Mentha spicata</i>	Cushion Bush	1m	300mm
Pl-si	<i>Platanus tentaculatus</i>	Mint	0.6m	300mm
Ph-fl	<i>Phacelia x fasseri</i>	Pittosporum Silver Sheen	3m	300mm
Ro-cl	<i>Rosa carolina</i>	Christmas Berry	2.5	300mm
Ru-pa	<i>Rubus pavlovskii</i>	Rosemary	1.5m	300mm
Sa-cl	<i>Salvia officinalis</i>	Thimbleberry	2.5m	300mm
St-by	<i>Stachys byzantina</i>	Sage	0.6m	300mm
Sy-ca	<i>Syringium cascadiense</i>	Lamb's Ear	0.6m	300mm
Sy-sm	<i>Syringium smithii</i>	Cascade Lily Pilly	3m	300mm
VH-l	<i>Viburnum tinus</i>	Lilly Pilly	5m	300mm
		Laurestinus	3m	300mm

FERNS				
As-nl	<i>Asplenium nidus</i>	Bird's-nest Fern	1m	45L
Cy-co	<i>Cyathea cooperi</i>	Corn Spot Fern	6m	45L
Di-an	<i>Dicksonia antarctica</i>	Soft Tree Fern	8m	45L

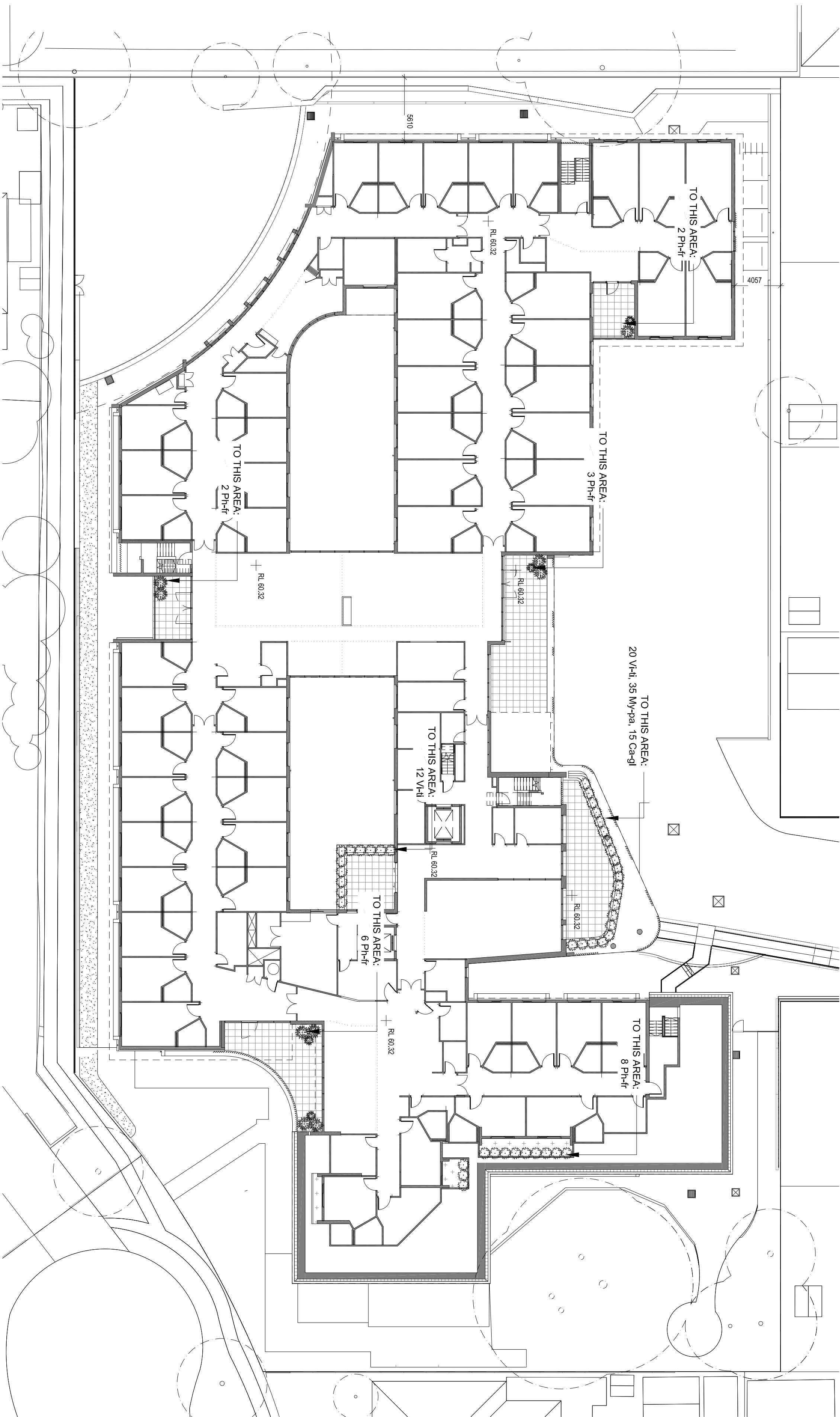
GROUNDCOVERS				
Ba-in	<i>Banksia integrifolia</i>	Roller Coaster	0.4m	150mm
Ca-gf	<i>Carpetaria glaucescens</i>	Pig Face	0.3m	150mm
Di-ca	<i>Dianella caerulea</i>	Blue flax-lily	1m	150mm
Di-re	<i>Dianella revivida</i>	Maui Flax Lily	0.5	150mm
Drs	<i>Dichoncha repens</i>	Kidney Weed	0.2m	150mm
Gr-pm	<i>Grevillea 'Prostrata Royal Mantle'</i>	Grevillea	0.3m	150mm
Gr-gc	<i>Grevillea gaudichaudii</i>	Grevillea	0.3m	150mm
Ha-v	<i>Hardyana violacea</i>	Purple Coral Pea	0.1m	150mm
My-pa	<i>Myoporum parvifolium</i>	Creeping Bobbalea	0.3m	150mm
Sc-ca	<i>Scorobolus calendulacea</i>	Dune Fan Flower	0.4m	150mm

GRASSES				
Gas-l	<i>Gemma subseriata</i>	Saw-sedge	0.2	150mm
Lo-fl	<i>Lomandra filiformis subsp. filiformis</i>	Wattle mat-rush	1m	150mm
Pol-a	<i>Poa labillardieri</i>	Tussock-grass	0.9m	150mm
Th-au	<i>Themeda australis</i>	Kangaroo Grass	1.5m	150mm

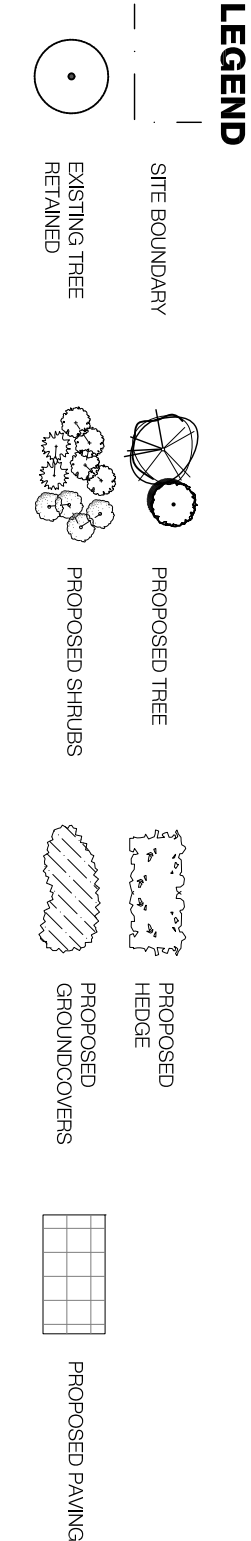
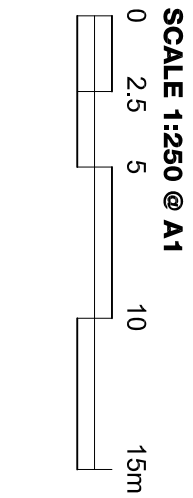
ROOF PLAN



LEVEL 1 PLAN



PLANTING PLAN



Project: 18-026s OPAL BOSSLEY PARK
client: OPAL AGED CARE
date: 13.01.2020
revision: A
drawn: GT
checked: AL